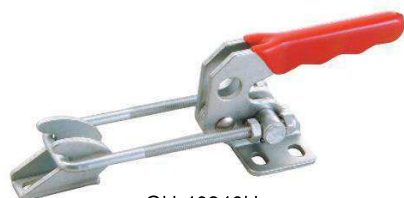


Modelos 40820H, 40840H, 40870H

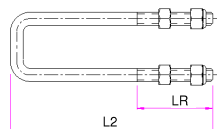
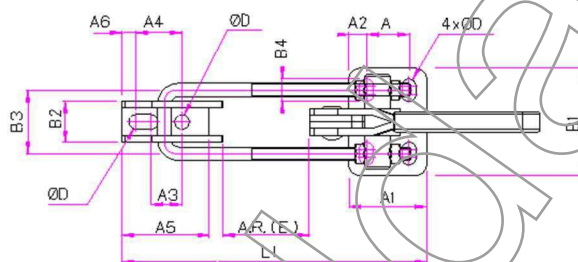
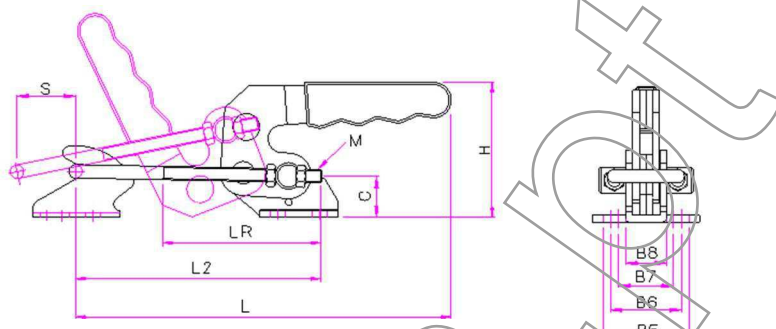
Modelo	Força \triangleleft F _{máx.}	Amplitude de regulação	Peso
GH-40820H	200 Kgf	42 mm	120 g
GH-40840H	400 Kgf	45 mm	306 g
GH-40870H	700 Kgf	70 mm	700 g

Nesta série, o mesmo grampo pode ser montado na horizontal ou vertical. Para tal basta mudar a posição do veio de suporte do estribo.

GH-40820H-SS versão em aço-inox
GH-40840H-SS versão em aço-inox



GH-40840H
(montado na horizontal)



Modelo	L2	Modelo	L2	Modelo	L2
GH-40820H-25	117	GH-40840H-25	165	GH-40870H-25	175
GH-40820H-50	142	GH-40840H-50	190	GH-40870H-50	200
GH-40820H-100	192	GH-40840H-100	240	GH-40870H-100	250

Modelo	A	A1	A2	A3	A4	A5	A6	B1	B2	B3	B4	B5	B6	B7	B8	C	ØD	(E)	H	L	L1	L2	LR	M	S
GH-40820H	13	26	6.5	11	-	23	4.5	36	21	21	7.7	29.2	24	19.8	13.8	11.8	5.2	9-47	46	130	107	90	65.3	4	19
GH-40840H	19	34.8	8.1	14	20.6	39	6.2	48	28.5	28.5	10	38.5	32.1	24.8	18.3	18.5	6.4	0-45	61	168.7	136.7	110	71	6	27
GH-40870H	32	51	9.5	19	-	40	8	63.5	28	44.5	13	63.5	45	36	27.5	24	8.5	16-70	85	211.8	186.5	146	85	8	37

Modelos 40820V, 40840V, 40870V

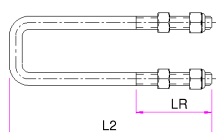
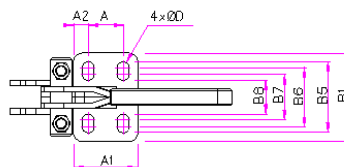
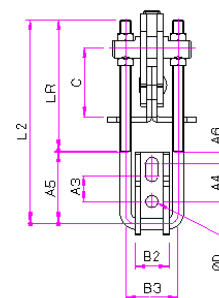
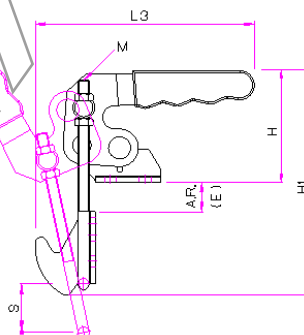
Modelo	Força \triangleright F _{máx.}	Amplitude de regulação	Peso
GH-40820V	200 Kgf	27 mm	120 g
GH-40840V	400 Kgf	22 mm	306 g
GH-40870V	700 Kgf	40 mm	700 g

Nesta série, o mesmo grampo pode ser montado na horizontal ou vertical. Para tal basta mudar a posição do veio de suporte do estribo.

GH-40820V-SS versão em aço-inox
GH-40840V-SS versão em aço-inox



GH-40840V
(montado na vertical)



Modelo	L2	Modelo	L2	Modelo	L2
GH-40820V-25	117	GH-40840V-25	165	GH-40870V-25	175
GH-40820V-50	142	GH-40840V-50	190	GH-40870V-50	200
GH-40820V-100	192	GH-40840V-100	240	GH-40870V-100	250

Modelo	A	A1	A2	A3	A4	A5	A6	B1	B2	B3	B5	B6	B7	B8	C	ØD	(E)	H	H1	L1	L2	LR	M	S
GH-40820V	13	26	6.5	11	-	23	4.5	36	21	21	29.2	24	19.8	13.8	27.2	5.2	0-32	46	97	74	90	65.3	4	24
GH-40840V	19	34.8	8.1	14	20.6	39	6.2	48	28.5	28.5	38.5	32.1	24.8	18.3	40.5	6.4	0-22	61	125	118.5	110	71	6	38
GH-40870V	32	51	9.5	19	-	40	8	63.5	28	44.5	63.5	45	36	27.5	52	8.5	0-32	85	168	134	146	85	8	52