



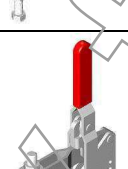
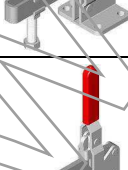
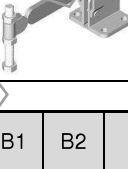
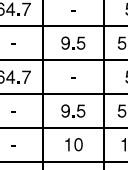


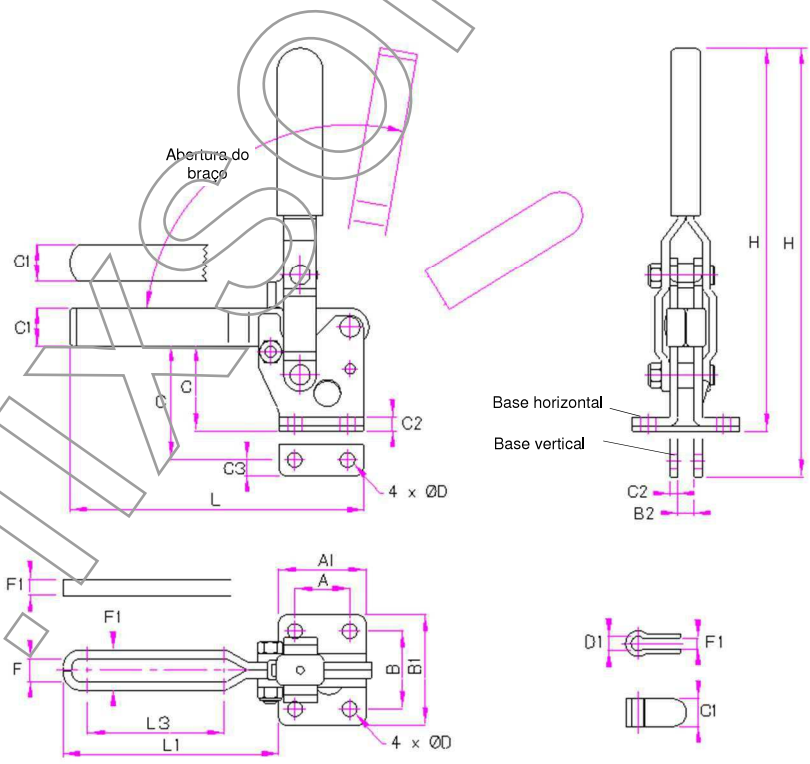
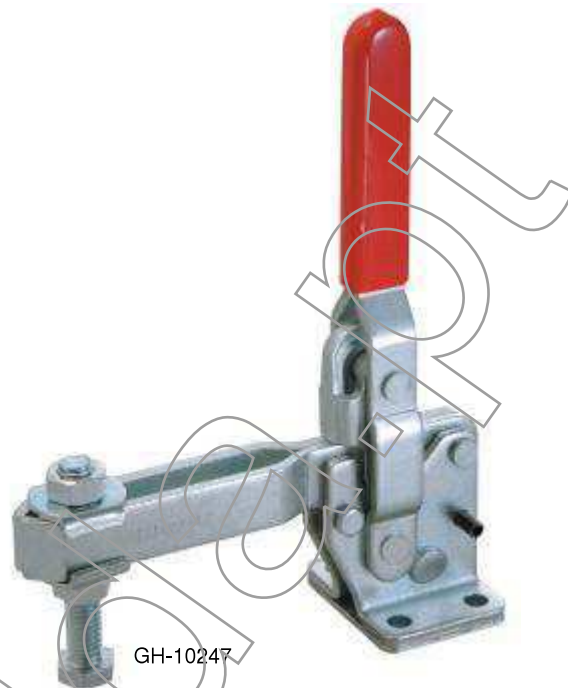
Séries 102, 101

Modelo	Força Δ F _{máx}	Aber.Braço*	Aber.Punho*	Peso
GH-10247	450 kgf	100° - 135°	58° - 70°	1.250 Kg
GH-10248	450 kgf	100° - 135°	58° - 70°	1.250 Kg
GH-10249	450 kgf	100° - 135°	58° - 70°	1.250 Kg
GH-10250	450 kgf	100° - 135°	58° - 70°	1.250 Kg
GH-101-J, JS	550 kgf	100° - 140°	48° - 60°	2.540 Kg
GH-101-JSB,-JSI	550 kgf	100° - 140°	48° - 60°	2.540 Kg

(*) c/ pino limitador – sem pino limitador

Com veios e casquilhos endurecidos e pinos limitadores amovíveis.

<p>GH-10247 Braço em calha, base horizontal, punho vertical. De série: Parafuso M12 Ref. FC-125017 2 anilhas de flanco M12 Ref. FW-120</p> 
<p>GH-10248 Braço em calha, base horizontal, punho vertical. De série: Parafuso M12 Ref. FC-125017 2 anilhas de flanco M12 Ref. FW-120</p> 
<p>GH-101-JSB Braço em barra, base vertical, punho vertical. De série: Parafuso M16 Ref. SA-12300 2 anilhas de flanco M12 Ref. FW-580</p> 
<p>GH-10249 Braço em barra, base horizontal, punho vertical. De série: Parafuso M12 Ref. FC-125017 Porta-parafuso M12 Ref. BR-120</p> 
<p>GH-10250 Braço em barra, base vertical, punho vertical. De série: Parafuso M12 Ref. FC-125017 Porta-parafuso M12 Ref. BR-120</p> 
<p>GH-101-JSI Braço em barra, base vertical, punho vertical. De série: Parafuso M16 Ref. F SA-12300C-125017 Porta-parafuso M12 Ref. BR-580</p> 
<p>GH-101-J Braço em calha, base horizontal, punho vertical. De série: Parafuso M16 Ref. SA-12300 2 anilhas de flanco M12 Ref. FW-580</p> 
<p>GH-101-JS Braço em barra, base horizontal, punho vertical. De série: Parafuso M16 Ref. F SA-12300C-125017 Porta-parafuso M12 Ref. BR-580</p> 



Base GH-10247, GH-10249, GH-101-J, JS

Porta-parafuso p/, GH-10249, GH-10250
BR-120
Porta-parafuso p/, GH-101-JS, GH-101-JSI
BR-580

Modelo	CR	A	A1	B	B1	B2	C	C1	C2	C3	ØD	D1	F	F1	~H	~L	L1	L3	Parafuso
GH-10247	U	31,8	50,8	45,7	64,7	-	51	22,2	8,2	-	8,7	-	13,4	23,4	225	176	126,4	79,4	M12
GH-10248	UB	31,8	50,8	-	-	9,5	57,5	22,2	5	9,5	8,7	-	13,4	23,4	241	176	126,4	79,4	M12
GH-10249	S	31,8	50,8	45,7	64,7	-	51	22,2	8,2	-	8,7	13	-	9,5	225	176	126,4	-	M12
GH-10250	SB	31,8	50,8	-	-	9,5	57,5	22,2	5	9,5	8,7	13	-	9,5	241	176	126,4	-	M12
GH-101-JSB	UR	51	76,2	-	-	10	106	31,8	8,2	12,8	12,3	-	16,7	26,7	343	229	153	104,6	M16
GH-101-JSI	SB	51	76,2	-	-	10	106	31,8	8,2	12,8	12,3	16	-	10	343	229	153	-	M16
GH-101-J	U	51	76,2	70	95,2	-	83	31,8	5	-	12,3	-	16,7	26,7	305	229	153	104,6	M16
GH-101-JS	S	51	76,2	70	95,2	-	83	31,8	5	-	12,3	16	-	10	305	229	153	-	M16